



Remote Session Management at Enterprise Scale

Monitor, record, and control privileged sessions.

As IT groups scale their efforts across larger networks, new cloud services, various connection protocols, numerous privileged users, different business groups, and customer environments, they need to closely monitor privileged accounts across sessions. Teams must navigate complex networks, cloud services, and user needs. When multiple sessions are active at once, each using different connection protocols and privileged accounts, managing, and securing them is a challenge.

Connection Manager is an advanced remote connection management solution that provides one place to manage and interact with multiple remote sessions.

✓ Maximize productivity

- Support use of specific protocols, tools, and user interfaces for multiple sessions.
- Launch new sessions in a separate tab for better visibility.
- Quickly switch between sessions Available for Windows and MacOS.

✓ Secure credentials

- Inject credentials automatically into sessions from Secret Server.
- Minimize privilege escalation and third-party privileged account misuse.
- Reduce improper access due to administrative errors.

✓ Centralize control

- Secure access to privileged credentials via Secret Server integration.
- Support workflow actions, accessible in a single location.
- Improve accountability and oversight of privileged users.

✓ Monitor and audit

- Capture every action taken in your audit log to prove regulatory compliance.
- Record sessions.
- Meet regulations including SOX, HIPAA, ICS CERT, GLBA, PCI DSS, FDCC, and FISMA, among others.

Connection Manager Benefits



IMPROVE SECURITY

Improve oversight of all privileged sessions and users



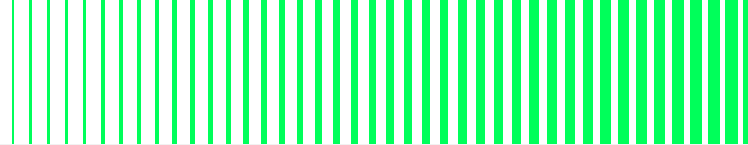
UNBURDEN IT TEAMS

Centralize control of sessions to reduce confusion and enhance usability



SCALE YOUR PAM

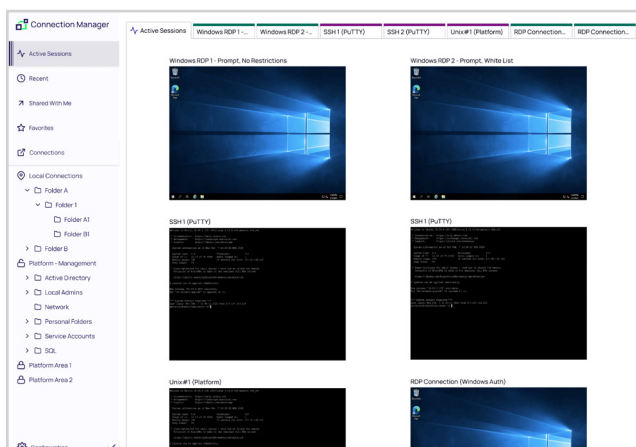
Gain visibility across hundreds of connections in a single location



Connection Manager scales across hundreds of connections through a single interface to improve productivity, reduce risk, and meet compliance requirements.

Connection Manager provides a unified environment to manage and interact with multiple remote sessions for both Remote Desktop Protocol (RDP) and Secure Shell (SSH). Access credentials, session recording, multi-factor authentication, and secrets access workflows from a single location.

- Single interface with multiple remote sessions
- Standard RDP and SSH controls
- Session management feature for Secret Server and ad-hoc sessions
- Credentials from secrets and support for workflow actions
- Multiple authentication methods
- Connections to multiple environments
- Advanced search for secrets and connection names



✔ Streamline control over sessions

Connection Manager saves time and lowers risk

Remote Access: Launch and configure sessions across multiple environments.

Session Management: Inject credentials into sessions automatically

Centralized Control: Access a single interface to manage and interact with sessions.

Session Recording: Create an end-to-end record of privileged user access.

Tracking and Auditing: Provide an audit trail to demonstrate compliance.

Why Connection Manager?

Rapid deployment to start. Elastic scalability to grow. Easy access to privileged credentials from the Secret Server vault on-premises or in the cloud. Monitor, record, and control simultaneous remote sessions from a single interface.

Try Connection Manager for Free at [Delinea.com](https://delinea.com)

Delinea

Delinea is a pioneer in securing identities through centralized authorization, making organizations more secure by seamlessly governing their interactions across the modern enterprise. Delinea allows organizations to apply context and intelligence throughout the identity lifecycle across cloud and traditional infrastructure, data, and SaaS applications to eliminate identity-related threats. With intelligent authorization, Delinea provides the only platform that enables you to discover all identities, assign appropriate access levels, detect irregularities, and immediately respond to identity threats in real-time. Delinea accelerates your teams' adoption by deploying in weeks, not months, and makes them more productive by requiring 90% fewer resources to manage than the nearest competitor. With a guaranteed 99.99% uptime, the Delinea Platform is the most reliable identity security solution available. Learn more about Delinea on [LinkedIn](#), [Twitter](#), and [YouTube](#).